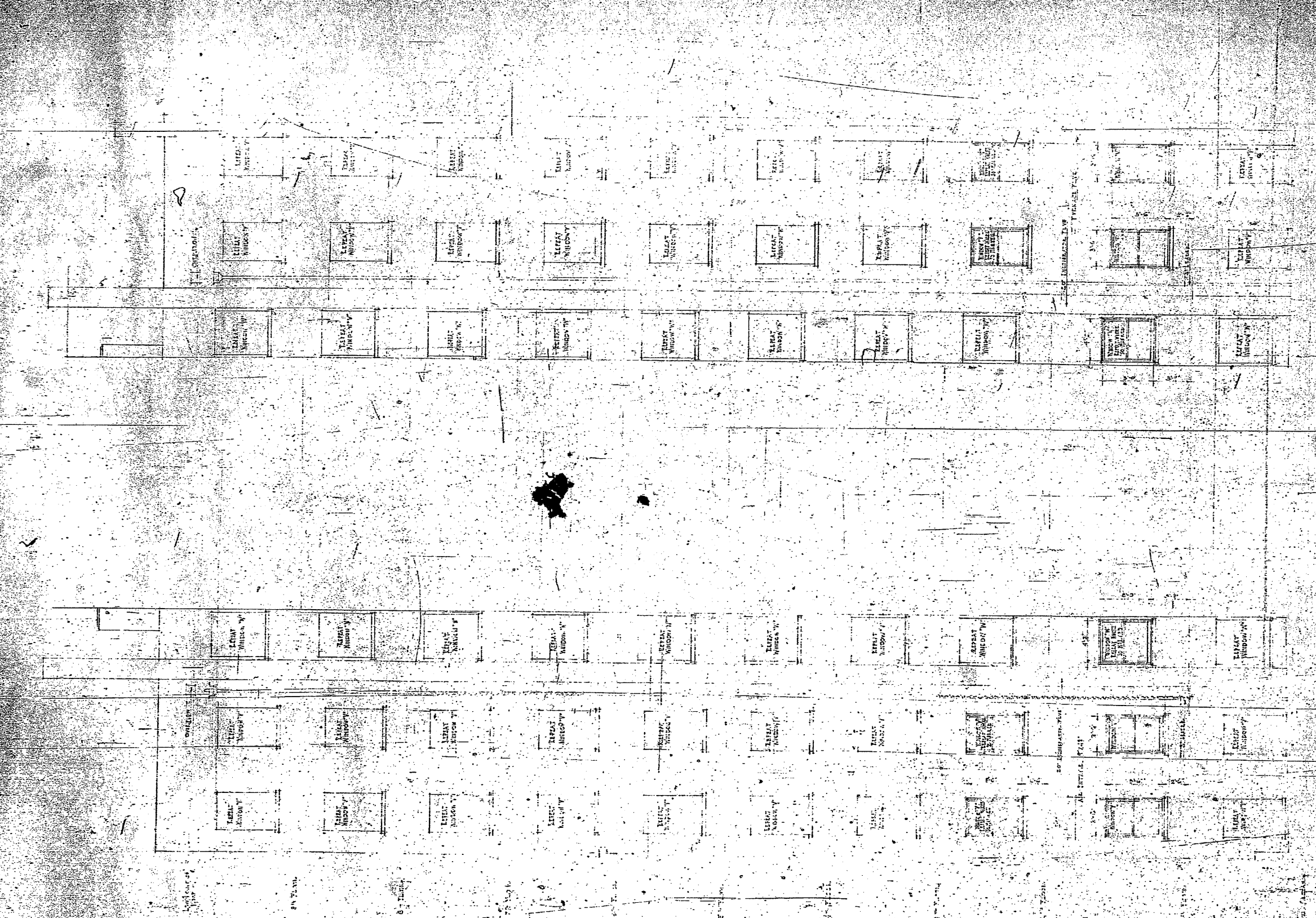


THE FRANCISCO APARTMENTS
 MUNICIPAL CORP. SAN FRANCISCO
 A. C. BLUMENFELD & CO. ARCHITECTS

POWELL STREET ENTRANCE

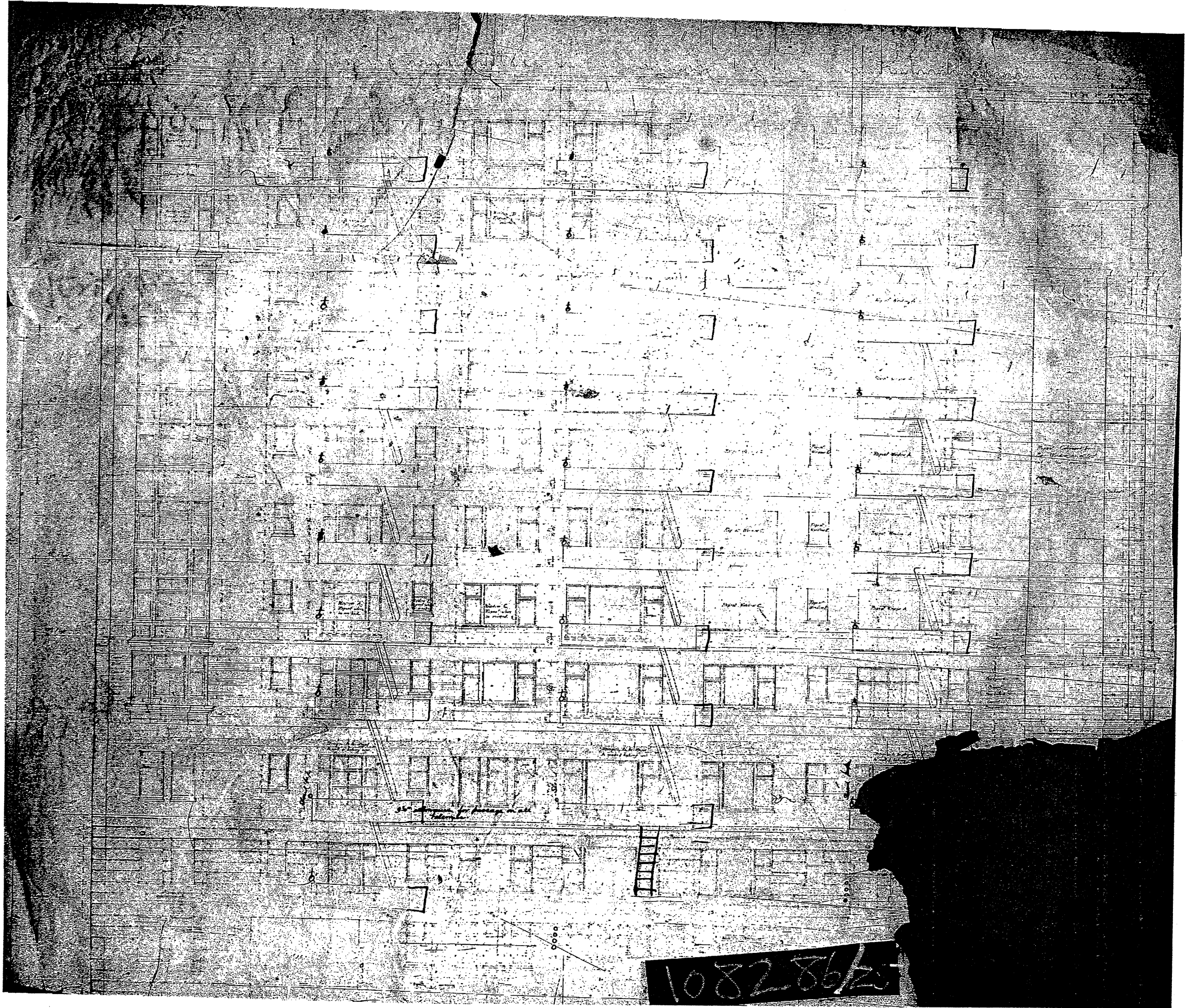
High Part of Street
Low Part of Street



THE FRANCISCO APARTMENTS
 1000 MARKET STREET
 SAN FRANCISCO, CALIF.

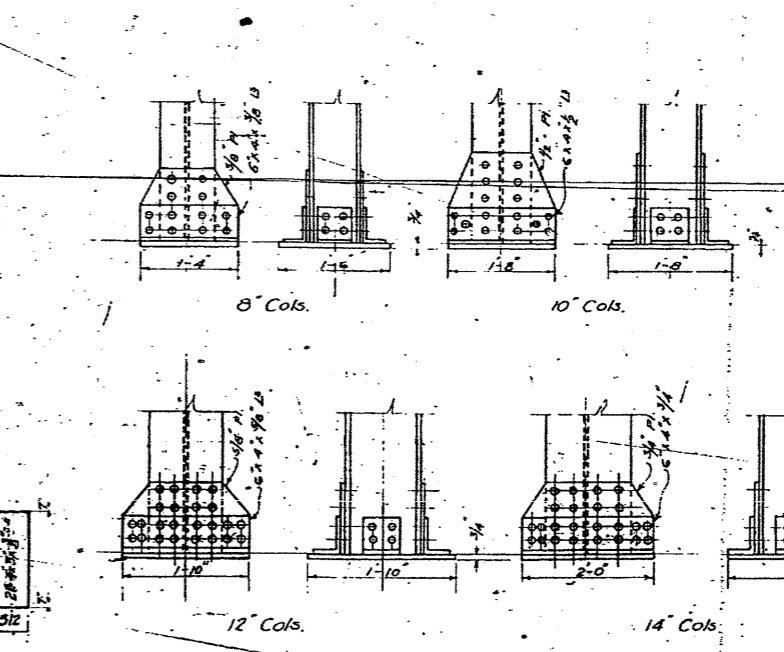
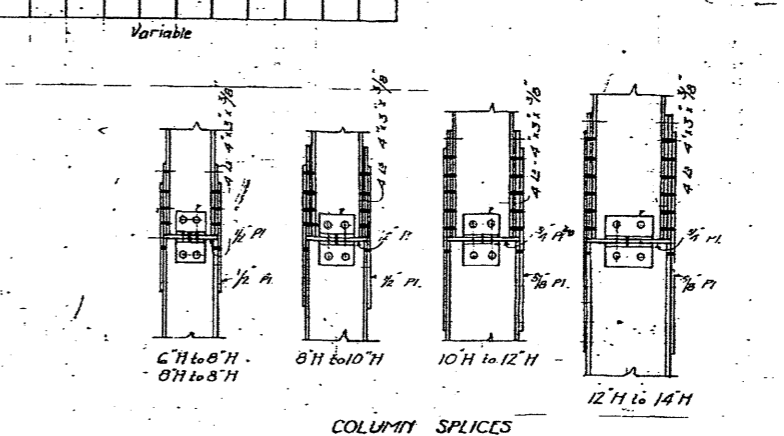
EAST ELEVATOR COV.

WEST ELEVATOR COV.

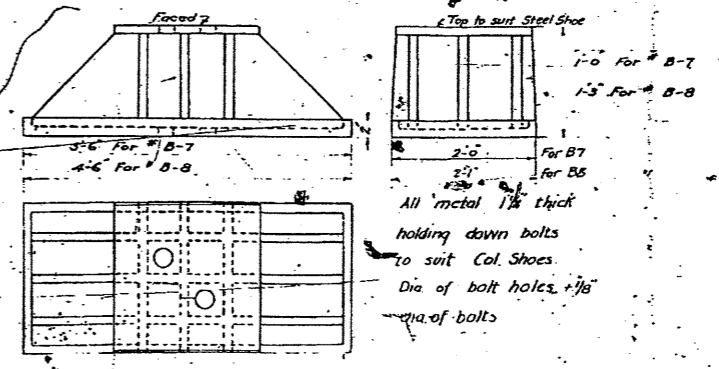
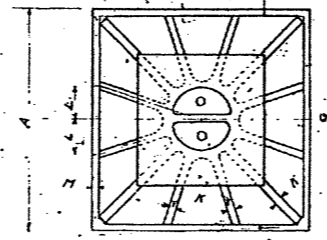


108286/25

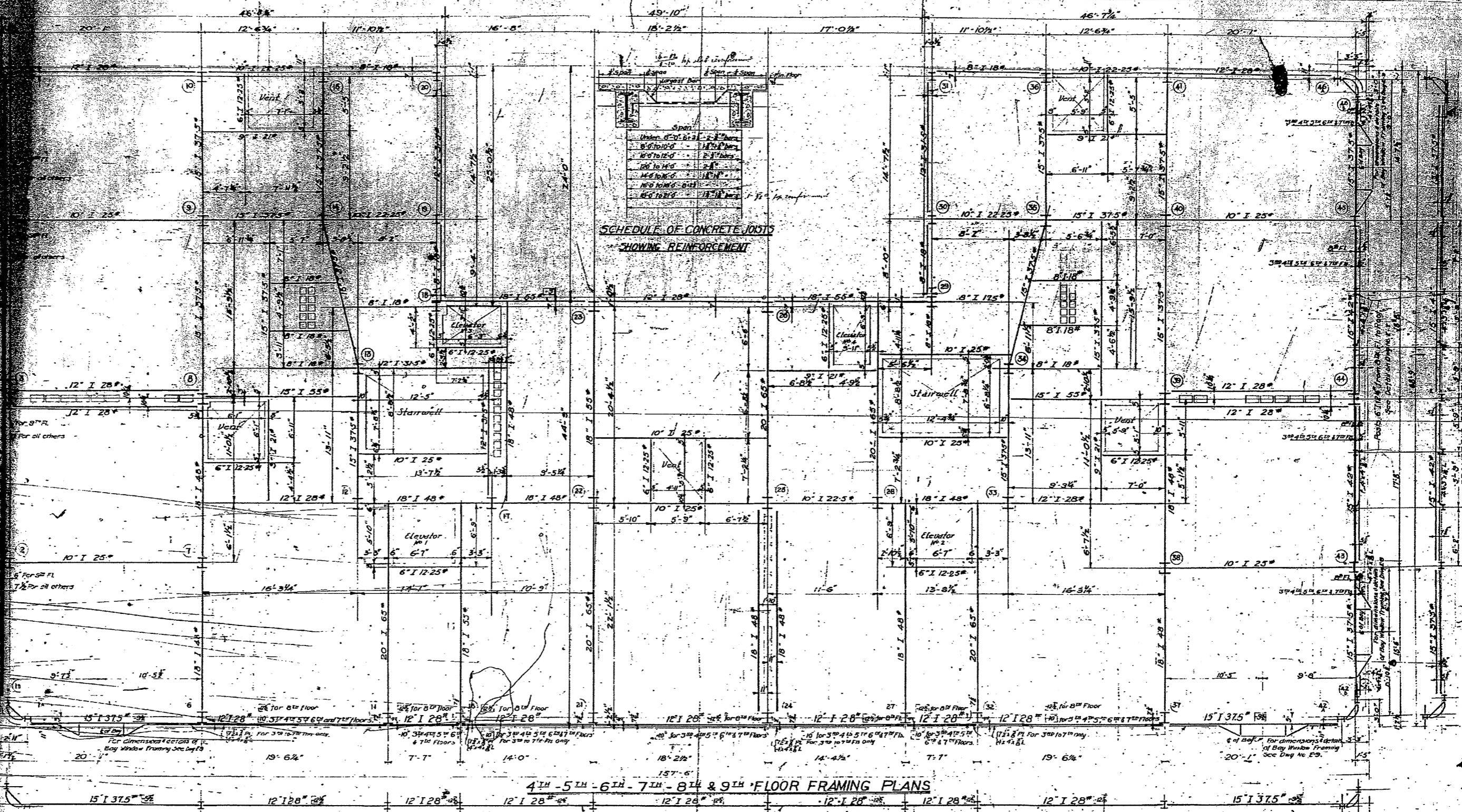
Column Number	Section	Top Section	Bottom Section	Notes
1	B-1	14'-11" x 106.5"	12'-7" x 78"	
2	B-2	14'-11" x 106.5"	12'-7" x 78"	
3	B-3	14'-11" x 106.5"	12'-7" x 78"	
4	B-4	14'-11" x 106.5"	12'-7" x 78"	
5	B-5	14'-11" x 106.5"	12'-7" x 78"	
6	B-6	14'-11" x 106.5"	12'-7" x 78"	
7	B-7	14'-11" x 106.5"	12'-7" x 78"	
8	B-8	14'-11" x 106.5"	12'-7" x 78"	
9	B-9	14'-11" x 106.5"	12'-7" x 78"	
10	B-10	14'-11" x 106.5"	12'-7" x 78"	
11	B-11	14'-11" x 106.5"	12'-7" x 78"	
12	B-12	14'-11" x 106.5"	12'-7" x 78"	
13	B-13	14'-11" x 106.5"	12'-7" x 78"	
14	B-14	14'-11" x 106.5"	12'-7" x 78"	
15	B-15	14'-11" x 106.5"	12'-7" x 78"	
16	B-16	14'-11" x 106.5"	12'-7" x 78"	
17	B-17	14'-11" x 106.5"	12'-7" x 78"	
18	B-18	14'-11" x 106.5"	12'-7" x 78"	
19	B-19	14'-11" x 106.5"	12'-7" x 78"	
20	B-20	14'-11" x 106.5"	12'-7" x 78"	
21	B-21	14'-11" x 106.5"	12'-7" x 78"	
22	B-22	14'-11" x 106.5"	12'-7" x 78"	
23	B-23	14'-11" x 106.5"	12'-7" x 78"	
24	B-24	14'-11" x 106.5"	12'-7" x 78"	
25	B-25	14'-11" x 106.5"	12'-7" x 78"	
26	B-26	14'-11" x 106.5"	12'-7" x 78"	
27	B-27	14'-11" x 106.5"	12'-7" x 78"	
28	B-28	14'-11" x 106.5"	12'-7" x 78"	
29	B-29	14'-11" x 106.5"	12'-7" x 78"	
30	B-30	14'-11" x 106.5"	12'-7" x 78"	
31	B-31	14'-11" x 106.5"	12'-7" x 78"	
32	B-32	14'-11" x 106.5"	12'-7" x 78"	
33	B-33	14'-11" x 106.5"	12'-7" x 78"	
34	B-34	14'-11" x 106.5"	12'-7" x 78"	
35	B-35	14'-11" x 106.5"	12'-7" x 78"	
36	B-36	14'-11" x 106.5"	12'-7" x 78"	
37	B-37	14'-11" x 106.5"	12'-7" x 78"	
38	B-38	14'-11" x 106.5"	12'-7" x 78"	
39	B-39	14'-11" x 106.5"	12'-7" x 78"	
40	B-40	14'-11" x 106.5"	12'-7" x 78"	
41	B-41	14'-11" x 106.5"	12'-7" x 78"	
42	B-42	14'-11" x 106.5"	12'-7" x 78"	
43	B-43	14'-11" x 106.5"	12'-7" x 78"	
44	B-44	14'-11" x 106.5"	12'-7" x 78"	
45	B-45	14'-11" x 106.5"	12'-7" x 78"	
46	B-46	14'-11" x 106.5"	12'-7" x 78"	
47	B-47	14'-11" x 106.5"	12'-7" x 78"	
48	B-48	14'-11" x 106.5"	12'-7" x 78"	
49	B-49	14'-11" x 106.5"	12'-7" x 78"	
50	B-50	14'-11" x 106.5"	12'-7" x 78"	
51	B-51	14'-11" x 106.5"	12'-7" x 78"	
52	B-52	14'-11" x 106.5"	12'-7" x 78"	
53	B-53	14'-11" x 106.5"	12'-7" x 78"	
54	B-54	14'-11" x 106.5"	12'-7" x 78"	
55	B-55	14'-11" x 106.5"	12'-7" x 78"	
56	B-56	14'-11" x 106.5"	12'-7" x 78"	
57	B-57	14'-11" x 106.5"	12'-7" x 78"	
58	B-58	14'-11" x 106.5"	12'-7" x 78"	
59	B-59	14'-11" x 106.5"	12'-7" x 78"	
60	B-60	14'-11" x 106.5"	12'-7" x 78"	
61	B-61	14'-11" x 106.5"	12'-7" x 78"	
62	B-62	14'-11" x 106.5"	12'-7" x 78"	
63	B-63	14'-11" x 106.5"	12'-7" x 78"	
64	B-64	14'-11" x 106.5"	12'-7" x 78"	
65	B-65	14'-11" x 106.5"	12'-7" x 78"	
66	B-66	14'-11" x 106.5"	12'-7" x 78"	
67	B-67	14'-11" x 106.5"	12'-7" x 78"	
68	B-68	14'-11" x 106.5"	12'-7" x 78"	
69	B-69	14'-11" x 106.5"	12'-7" x 78"	
70	B-70	14'-11" x 106.5"	12'-7" x 78"	
71	B-71	14'-11" x 106.5"	12'-7" x 78"	
72	B-72	14'-11" x 106.5"	12'-7" x 78"	
73	B-73	14'-11" x 106.5"	12'-7" x 78"	
74	B-74	14'-11" x 106.5"	12'-7" x 78"	
75	B-75	14'-11" x 106.5"	12'-7" x 78"	
76	B-76	14'-11" x 106.5"	12'-7" x 78"	
77	B-77	14'-11" x 106.5"	12'-7" x 78"	
78	B-78	14'-11" x 106.5"	12'-7" x 78"	
79	B-79	14'-11" x 106.5"	12'-7" x 78"	
80	B-80	14'-11" x 106.5"	12'-7" x 78"	
81	B-81	14'-11" x 106.5"	12'-7" x 78"	
82	B-82	14'-11" x 106.5"	12'-7" x 78"	
83	B-83	14'-11" x 106.5"	12'-7" x 78"	
84	B-84	14'-11" x 106.5"	12'-7" x 78"	
85	B-85	14'-11" x 106.5"	12'-7" x 78"	
86	B-86	14'-11" x 106.5"	12'-7" x 78"	
87	B-87	14'-11" x 106.5"	12'-7" x 78"	
88	B-88	14'-11" x 106.5"	12'-7" x 78"	
89	B-89	14'-11" x 106.5"	12'-7" x 78"	
90	B-90	14'-11" x 106.5"	12'-7" x 78"	
91	B-91	14'-11" x 106.5"	12'-7" x 78"	
92	B-92	14'-11" x 106.5"	12'-7" x 78"	
93	B-93	14'-11" x 106.5"	12'-7" x 78"	
94	B-94	14'-11" x 106.5"	12'-7" x 78"	
95	B-95	14'-11" x 106.5"	12'-7" x 78"	
96	B-96	14'-11" x 106.5"	12'-7" x 78"	
97	B-97	14'-11" x 106.5"	12'-7" x 78"	
98	B-98	14'-11" x 106.5"	12'-7" x 78"	
99	B-99	14'-11" x 106.5"	12'-7" x 78"	
100	B-100	14'-11" x 106.5"	12'-7" x 78"	



Mark	A	B	C	D	E	G	H	K	L	M	N	O
B-1	1'-10"	1'-9"	8"	1"	1"	1"	1"	1"	1"	1"	1"	1"
B-2	2'-6"	2'-5"	8"	1"	1"	1"	1"	1"	1"	1"	1"	1"
B-3	2'-3"	1'-3"	9"	1"	1"	1"	1"	1"	1"	1"	1"	1"
B-4	3'-0"	1'-3"	10"	1"	1"	1"	1"	1"	1"	1"	1"	1"
B-5	3'-6"	1'-3"	11"	1"	1"	1"	1"	1"	1"	1"	1"	1"
B-6	4'-0"	1'-3"	11"	1"	1"	1"	1"	1"	1"	1"	1"	1"



COLUMN SCHEDULE & DETAILS



SCHEDULE OF CONCRETE JOISTS
SHOWING REINFORCEMENT

4TH - 5TH - 6TH - 7TH - 8TH & 9TH FLOOR FRAMING PLANS

SACRAMENTO ST.

SPANDRELS FOR 9TH FLOOR ONLY

GENERAL NOTES:

1. All floor framing shown as shown on this plan except where noted otherwise E-7 for this framing.

2. Location of floor joists 2" below finished floor.

3. For dimensions of beams, see notes.

4. Figures give elevation of top of beam above floor.

5. For location of beams at round corners, see notes.

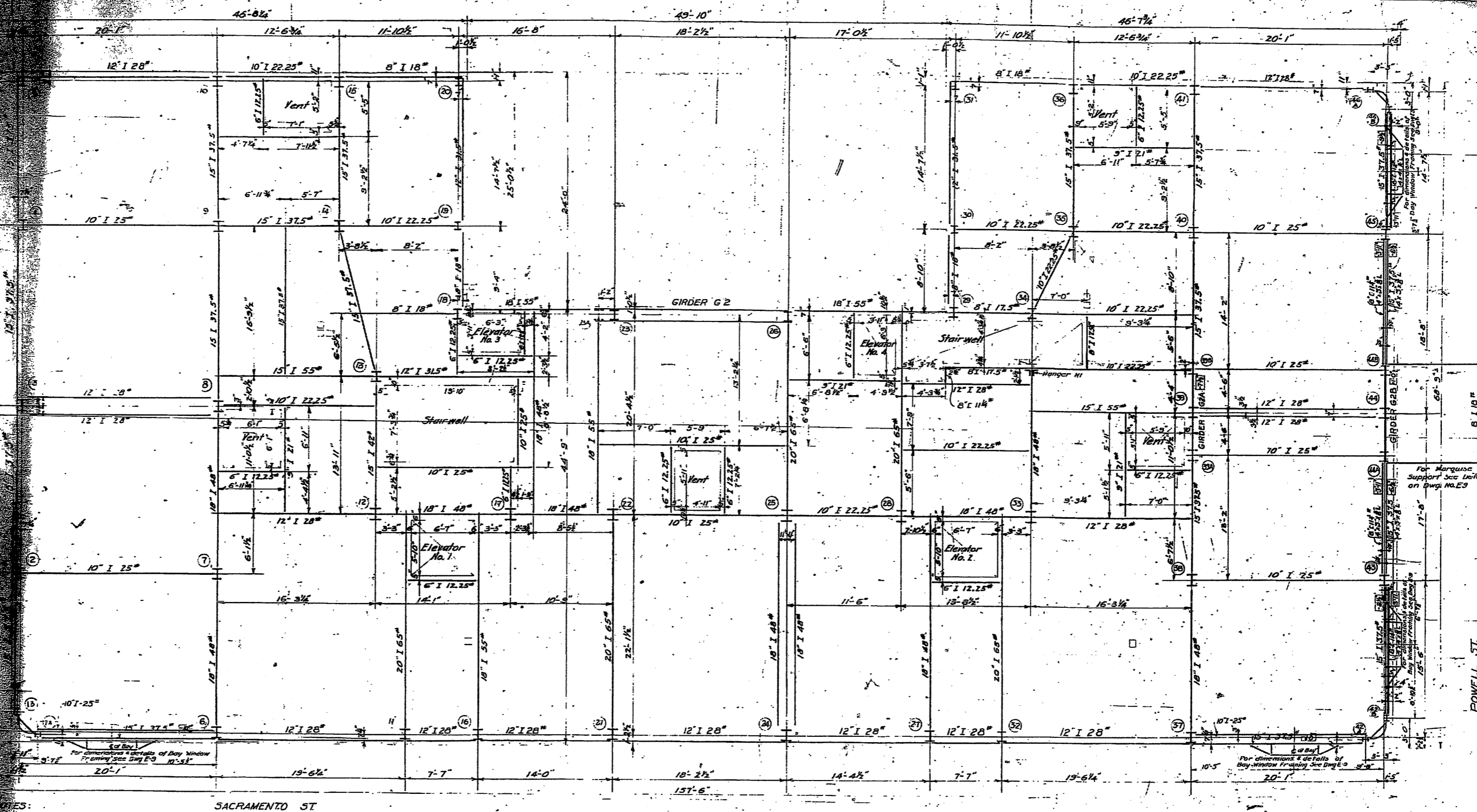
6. All framing wherever possible are to run across face of column, parallel to E. Where this is not possible, framing to run at angle on beam plate, 7" below finished floor, extending beyond E of column.

THE FRANCISCA APARTMENTS

W. C. H. W. T. H. & CO., EXCLUSIVE AGENTS

ARCHITECTS ASSOCIATES

DRAWING NO. E-2 SCALE 1/4" = 1' FOOT



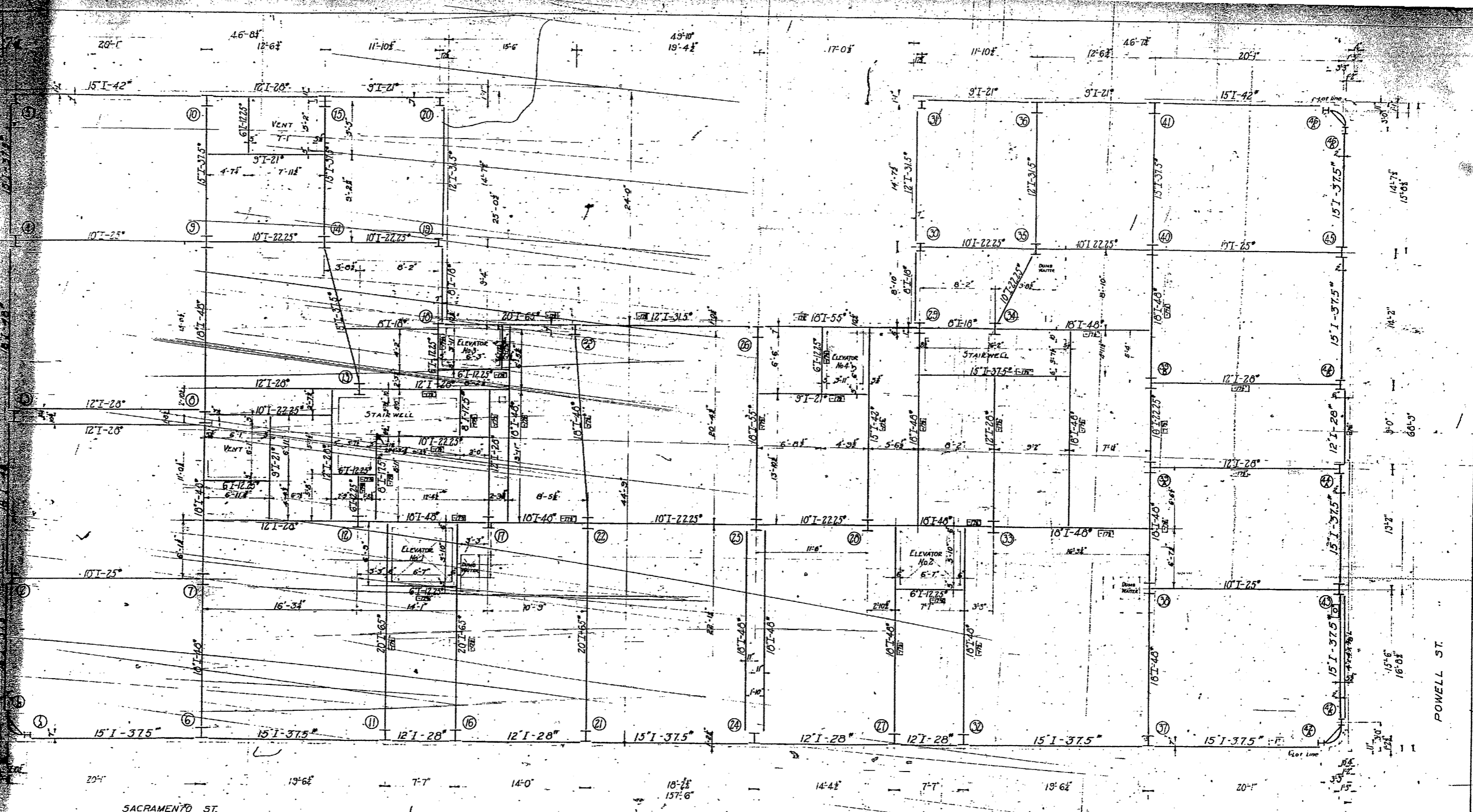
GENERAL NOTES:
 Elevation of Beams 7' below finished floor
 unless otherwise noted.
 For beams marked thus "E" figures give elevation
 of top of beam above or below finished floor.
 For elevations of beams at corners see
 the notes. Beams wherever possible are to run
 parallel to centerline of E. where this is not possible
 beams to run 1/2" above or 1/2" below center
 line of column or pier. Beams to run 1/2" below center
 line of column or pier must be 3" above 6" x 6" column.

SACRAMENTO ST

SECOND FLOOR FRAMING PLAN

SECOND FLOOR FRAMING PLAN

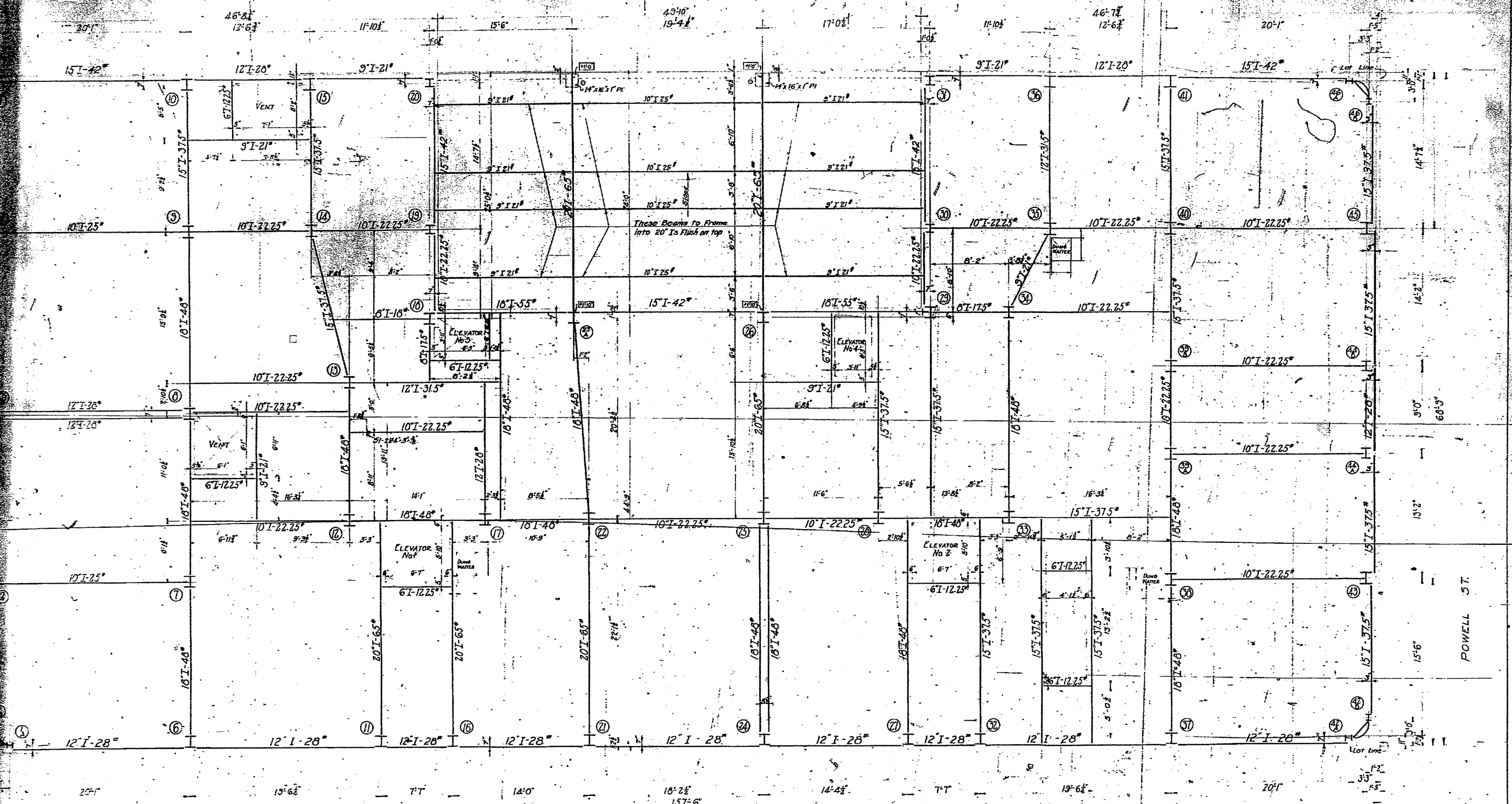
POWELL ST.



FIRST FLOOR FRAMING PLAN

GENERAL NOTES:
 Elevator shafts of beams "seen finished 1st floor
 unless otherwise noted.
 For all beams marked with "2" figures the elevation
 of beam top finished 1st floor.
 For elevators and shaft of stairs at rooms corners
 and along E.B. wall beams wherever possible are to run
 across face of column to within 1" of E. Where this is not
 possible column is to have 1" steel angle or bent plate
 when finished floor extending at least 3" beyond E of
 column.

FIRST FLOOR FRAMING PLAN
 15 APARTMENTS
 1500 POWELL ST. SAN FRANCISCO
 ARCHITECTS ASSOCIATES
 E-4 SCALE 3/4"=1'00"



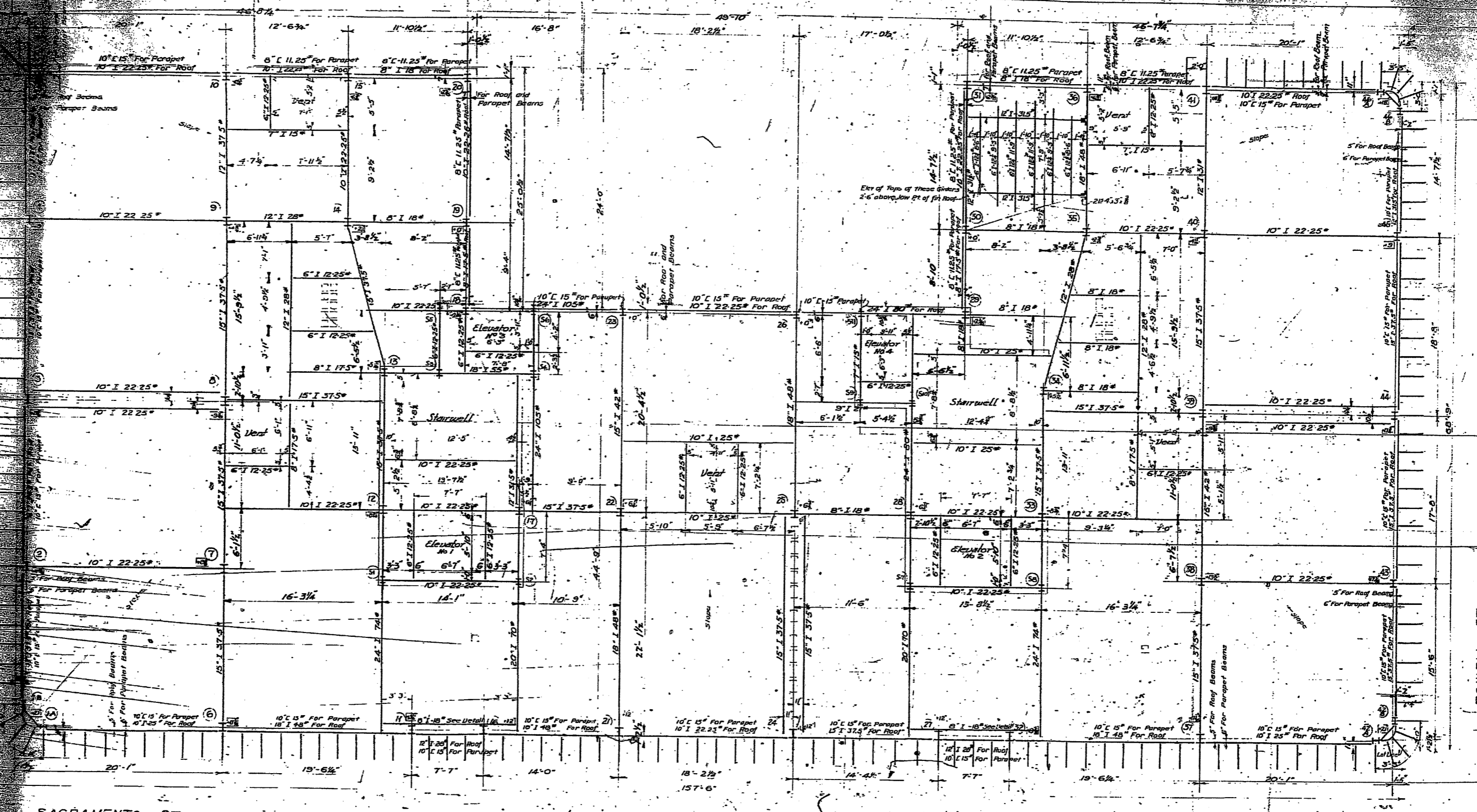
SACRAMENTO ST.

LOWER MEZZANINE FRAMING PLAN

LOWER MEZZANINE FRAMING PLAN

FRANCISCA APARTMENTS
 ARCHITECTS MENTHA & CO. ENGINEERS
 ARCHITECTS ASSOCIATES
 DRAWING NO. E-5 SCALE: 1/4" = 1' FOOT

NOTES:
 1. All dimensions are given in feet and inches.
 2. The figures in parentheses indicate the location of the finished floor.
 3. The location of beams at frame corners are shown wherever possible.
 4. The location of columns is shown in all cases.
 5. The location of beams is shown in all cases.
 6. The location of columns is shown in all cases.
 7. The location of beams is shown in all cases.
 8. The location of columns is shown in all cases.
 9. The location of beams is shown in all cases.
 10. The location of columns is shown in all cases.



SACRAMENTO ST.

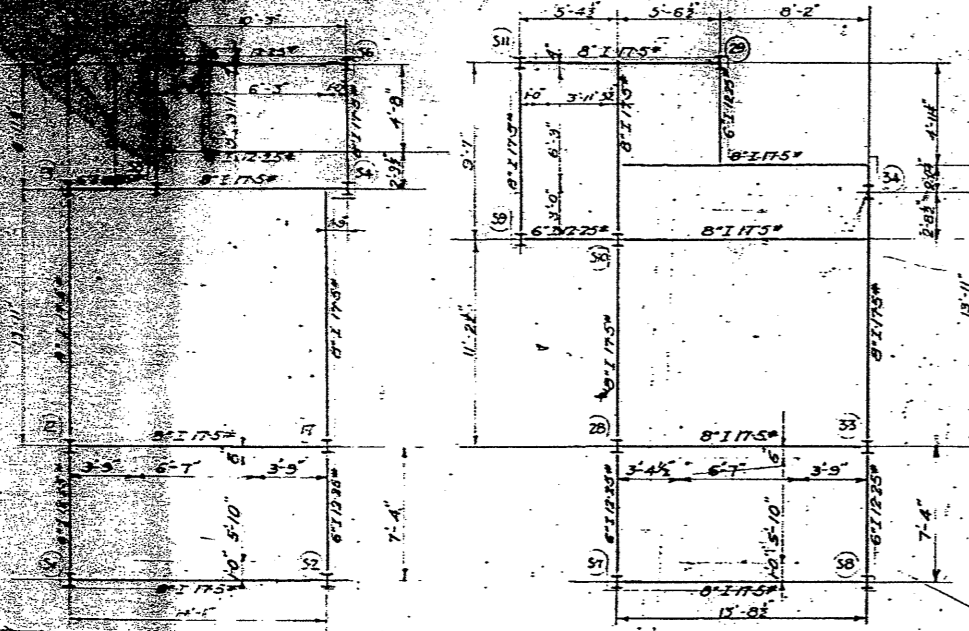
ROOF PLAN

ROOF FRAMING PLAN

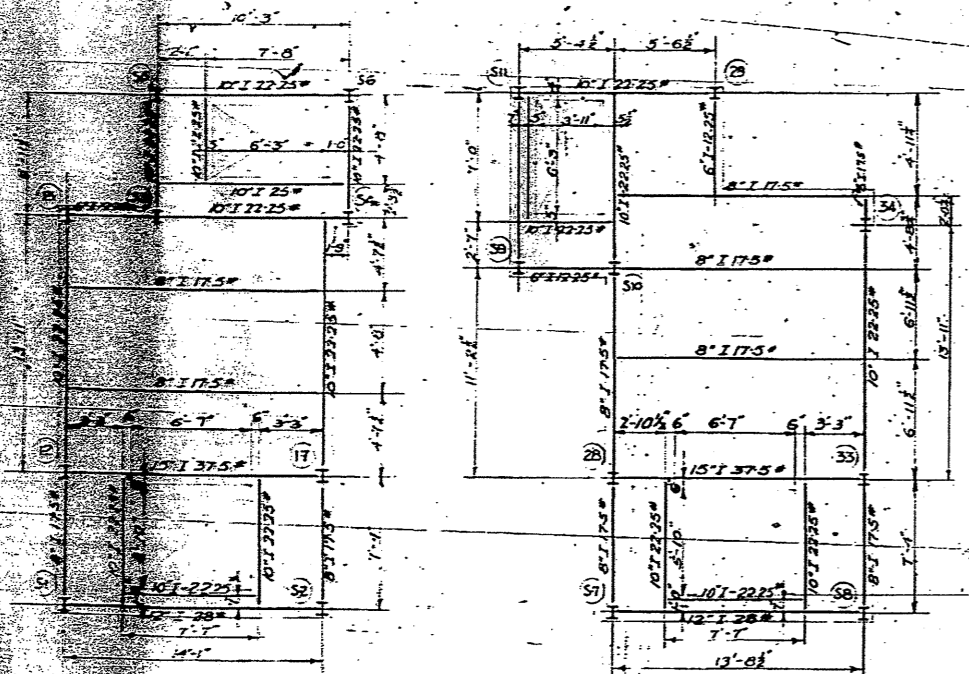
POWELL ST.

Dimensions on sheet of Roof, 10'-1" above
finished 3rd floor. Figures indicate
height of roof at E of low point of roof.
Dimensions of roof except wall beams
shown on plan to bottom of these
beams.
Dimensions of 3rd floor above finished 3rd floor.
Dimensions of 3rd floor above finished 3rd floor.
Dimensions of 3rd floor above finished 3rd floor.
Dimensions of 3rd floor above finished 3rd floor.

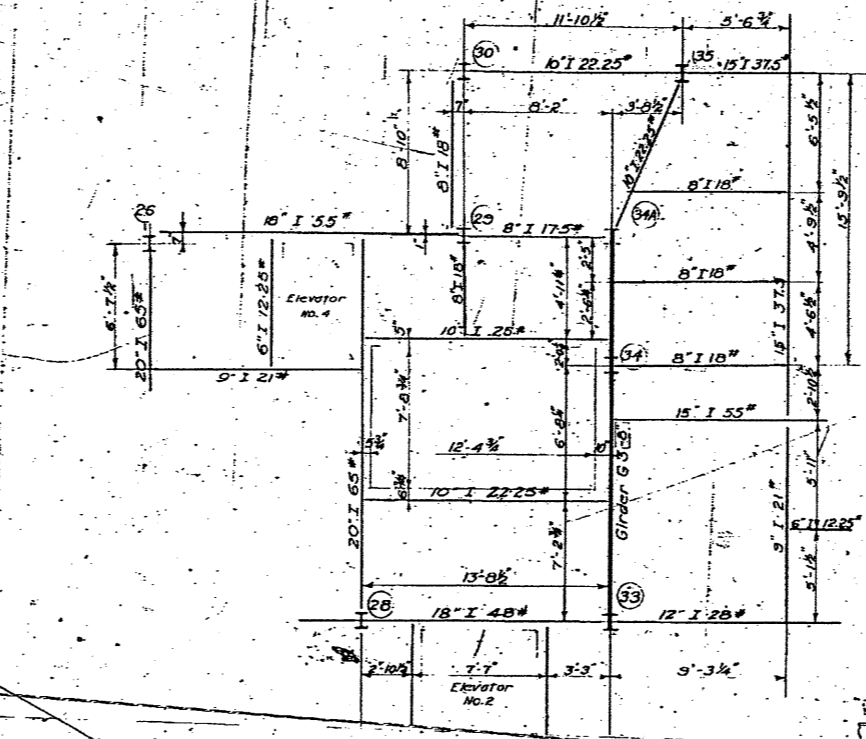
THE SAN FRANCISCO APARTMENTS
ARCHITECTS AND ENGINEERS
E-6 SCALE 1/4" = 1'-0"



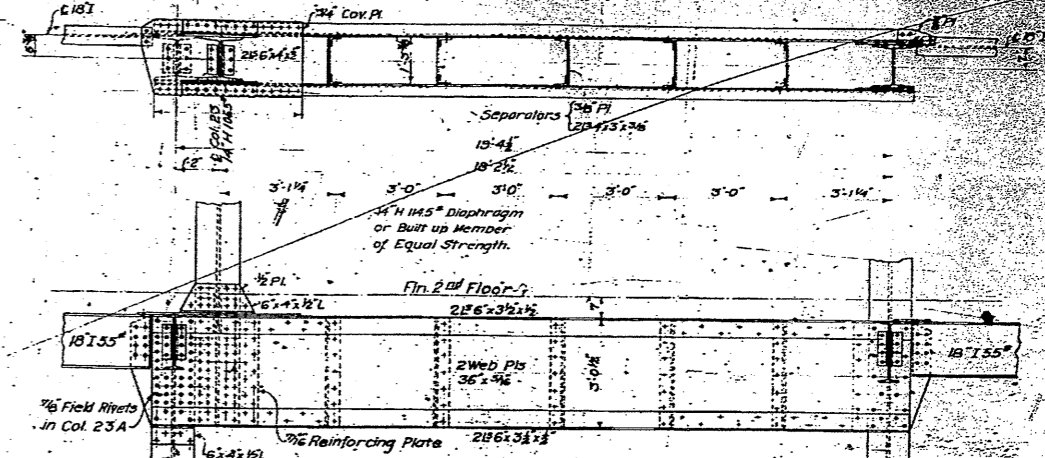
PENT HOUSE NO. 1 ROOF
 PENT HOUSE NO. 2 ROOF
 Tops of all Roof Beams 8'-5" above finished Elevator Machinery Floor



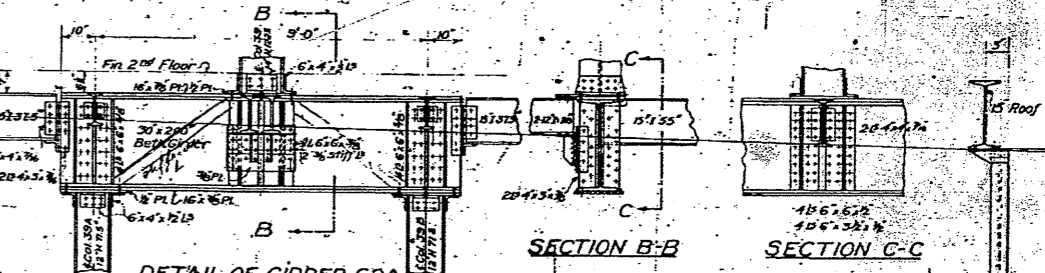
PENT HOUSE NO. 1 ELEVATOR MACHINERY FLOOR
 PENT HOUSE NO. 2 ELEVATOR MACHINERY FLOOR
 Tops of all Beams 4" below finished Elevator Machinery Floor.



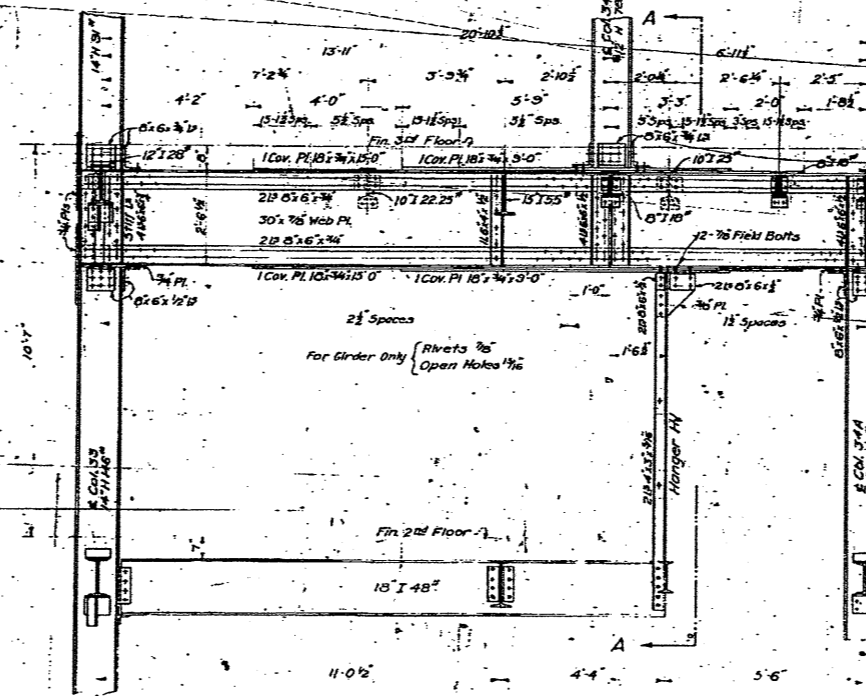
PART 3RD FLOOR FRAMING PLAN
 OTHERWISE SAME AS 4TH FLOOR ON DWG. E.2



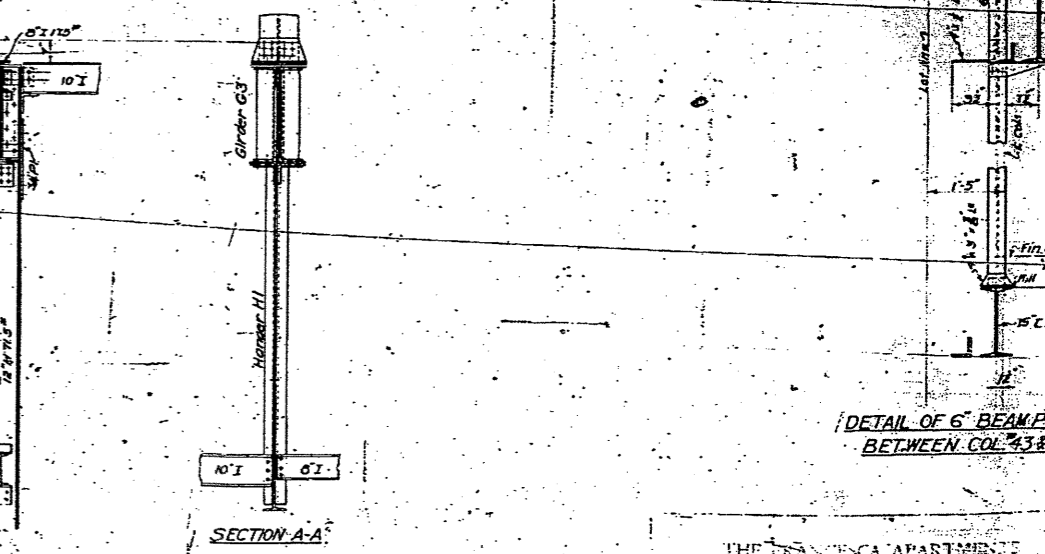
DETAIL OF 2ND FLOOR G.2
 Rivets 3/4"
 Open Holes 3/4" except as noted.
 Note: Top of Diaphragm to be milled 50 lbs to have exact bearing for Col. 23



DETAIL OF GIRDER G.2A
 Rivets 3/4"
 Rivets in Cover Pls. 3" alternate 3/8"
 Open Holes 3/4"
 Stiffener 1/2" to be ground to fit flanges of girder



DETAIL AT 3RD FLOOR GIRDER G.3



DETAIL OF 6" BEAM POSTS BETWEEN COL. 43 & 45

DEPARTMENT OF
PUBLIC WORKS

DETAIL OF CURVED BEAM AT CORNERS
Note - Spandrel shown is of Columns 12A & 12B, but
dimensions for beam are same at all curved corners

TYPICAL SPANDREL SECTION
FOR ALL WINDOWS IN REAR OF
BUILDING & COURT WALLS.

FIRST FLOOR SPANDRELS
ON POWELL ST. BETWEEN COLS 12 & 13

2ND FLOOR SPANDREL ON POWELL ST.
BETWEEN COLS (44A-44B)

2ND FLOOR SPANDRELS ON POWELL ST.
THROUGH BAY WINDOWS

2ND FLOOR SPANDRELS ON POWELL ST.
BETWEEN COLS (43-44) & (44B-45)

3RD FLOOR SPANDREL ON POWELL ST.

FIRST FLOOR SPANDREL ON
SACRAMENTO ST. AND BETWEEN COLS 14 & 15

8TH FLOOR SPANDREL ON SACRAMENTO ST.
THRU BAY WINDOWS

9TH FLOOR SPANDRELS
ON SACRAMENTO ST.

9TH FLOOR SPANDRELS
BETWEEN COLS 14 & 15

4TH FLOOR SPANDREL ON POWELL ST.

8TH FLOOR SPANDREL ON POWELL ST.
THRU BAY WINDOWS

8TH FLOOR SPANDRELS
ON SACRAMENTO ST. & BETWEEN COLS 13 & 14

2ND FLOOR SPANDRELS
ON SACRAMENTO ST. THRU BAY WINDOWS

2ND FLOOR SPANDRELS
ON SACRAMENTO ST. BETWEEN COLS 14 & 15

LOWER MEZZANINE SPANDRELS
ON SACRAMENTO ST.

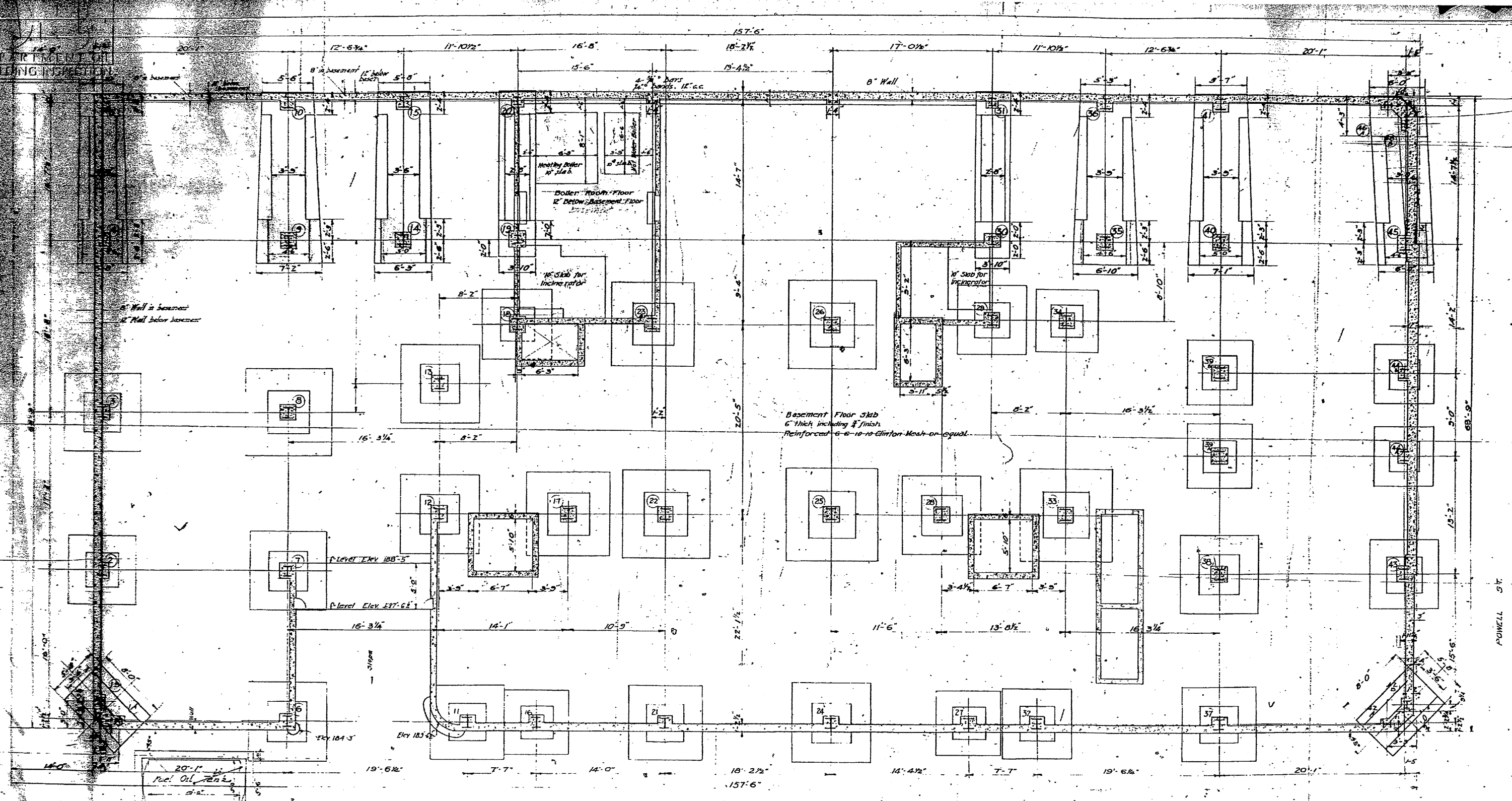
3RD TO 7TH FLOOR SPANDRELS ON SACRAMENTO ST.
THRU BAY WINDOWS

3RD TO 7TH FLOOR SPANDRELS
ON SACRAMENTO ST. & BETWEEN COLS 13 & 14

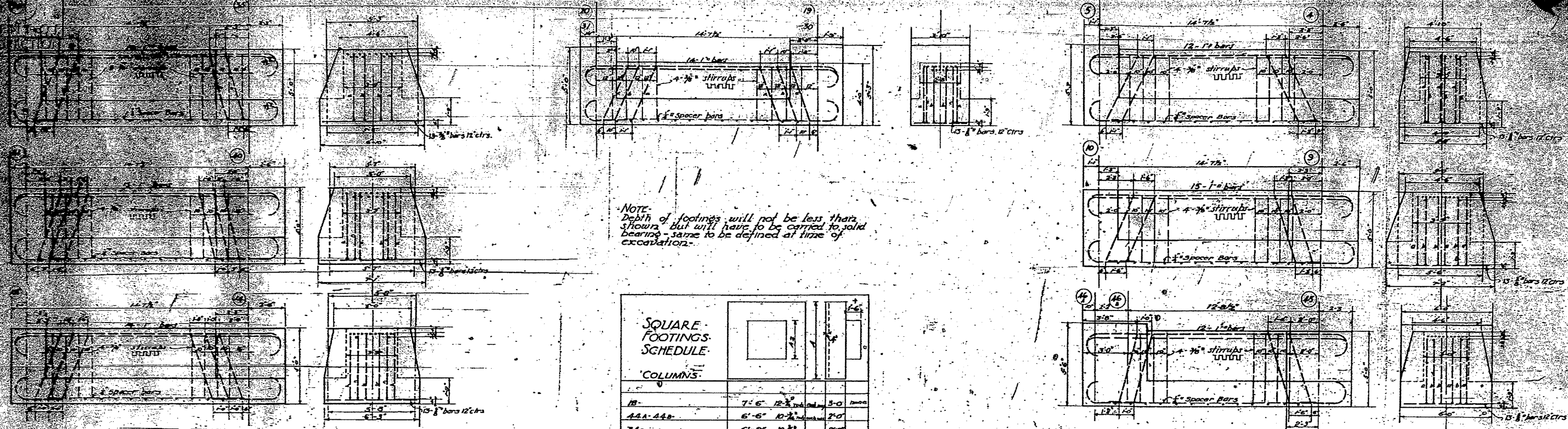
3RD TO 7TH FLOOR SPANDRELS ON POWELL ST.
THRU BAY WINDOWS

3RD TO 7TH FLOOR SPANDRELS ON POWELL ST.

DEPARTMENT OF PUBLIC WORKS
BUILDING DEPARTMENT



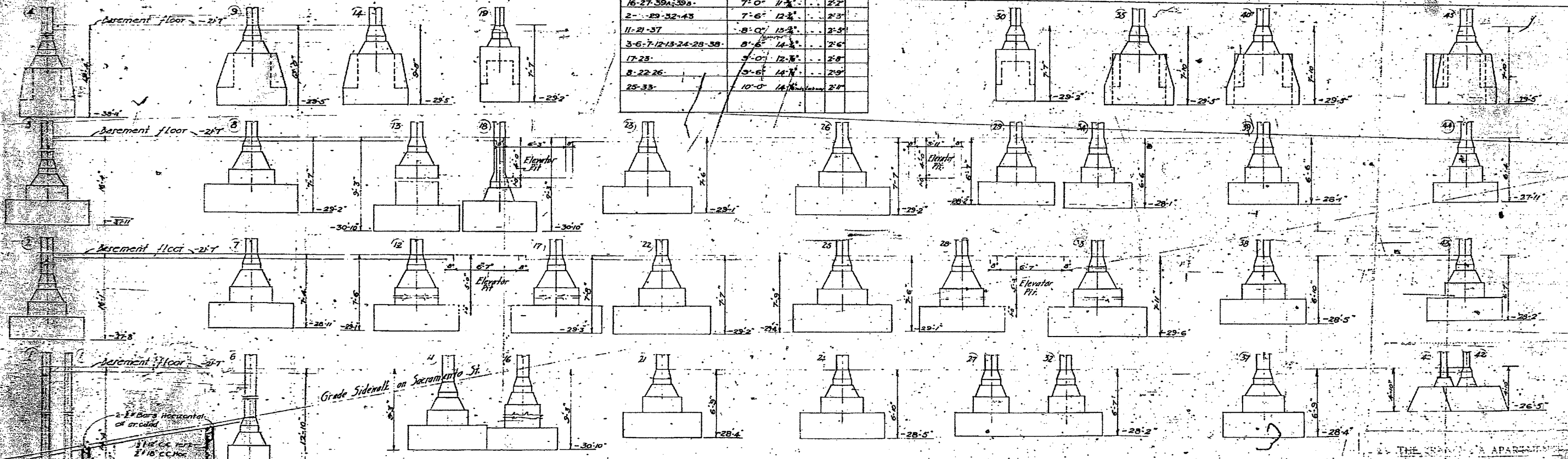
FOUNDATION PLAN



NOTE:
Depth of footings will not be less than shown. But will have to be carried to solid bearing - same to be defined at time of excavation.

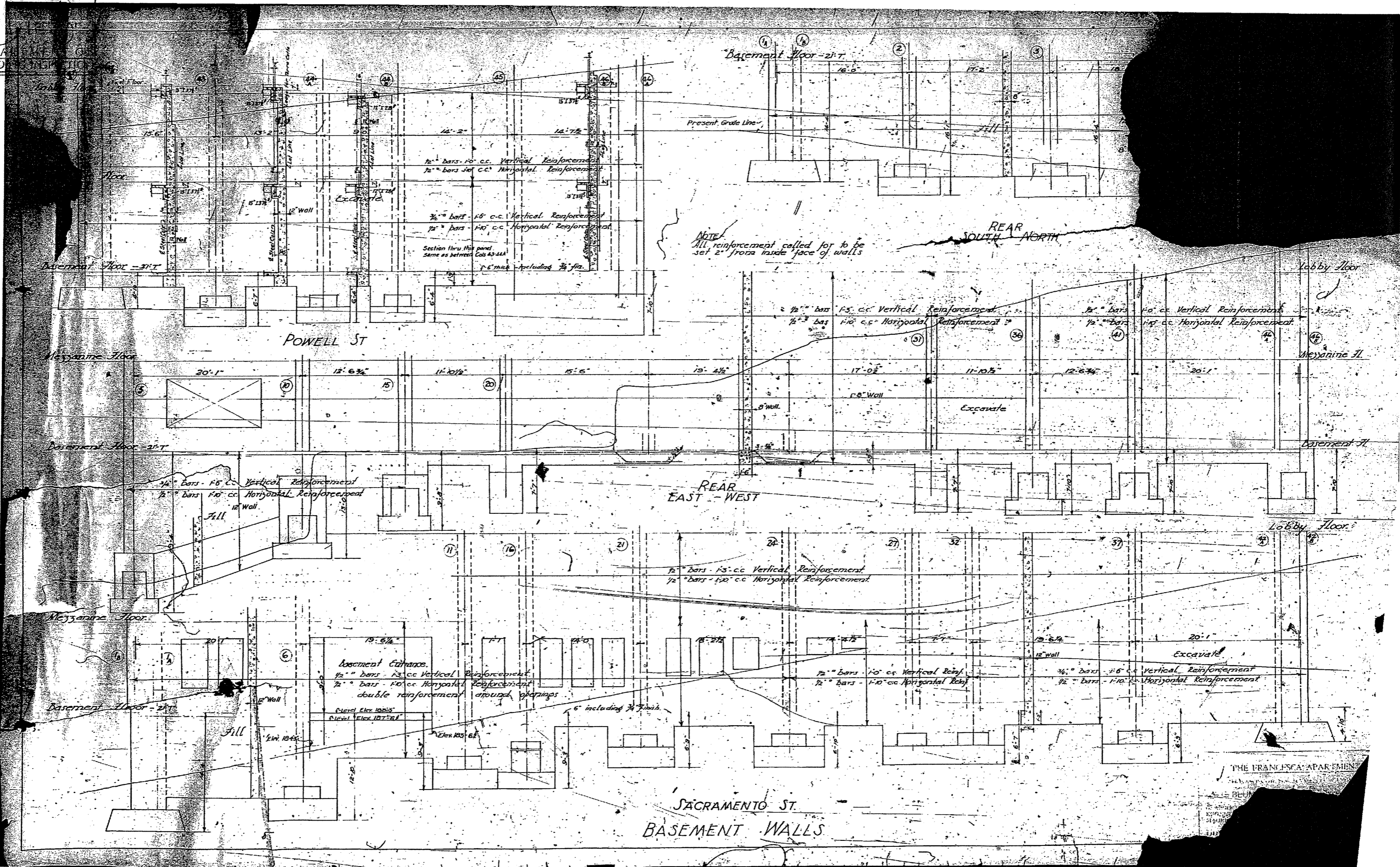
SQUARE FOOTINGS SCHEDULE
COLUMNS

Column No.	Column Width	Column Depth	Column Height
18	7'-6"	12'-6"	3'-0" above
44A-44B	6'-6"	10'-6"	2'-0"
34	6'-5"	10'-2"	2'-2"
16-27-39A-39B	7'-0"	11'-2"	2'-2"
2-29-32-43	7'-6"	12'-2"	2'-3"
11-21-37	8'-0"	13'-2"	2'-5"
3-6-7-12-13-24-28-38	8'-6"	14'-2"	2'-6"
17-23	9'-0"	15'-2"	2'-8"
8-22-26	9'-6"	16'-2"	2'-9"
25-33	10'-0"	17'-2"	2'-11"



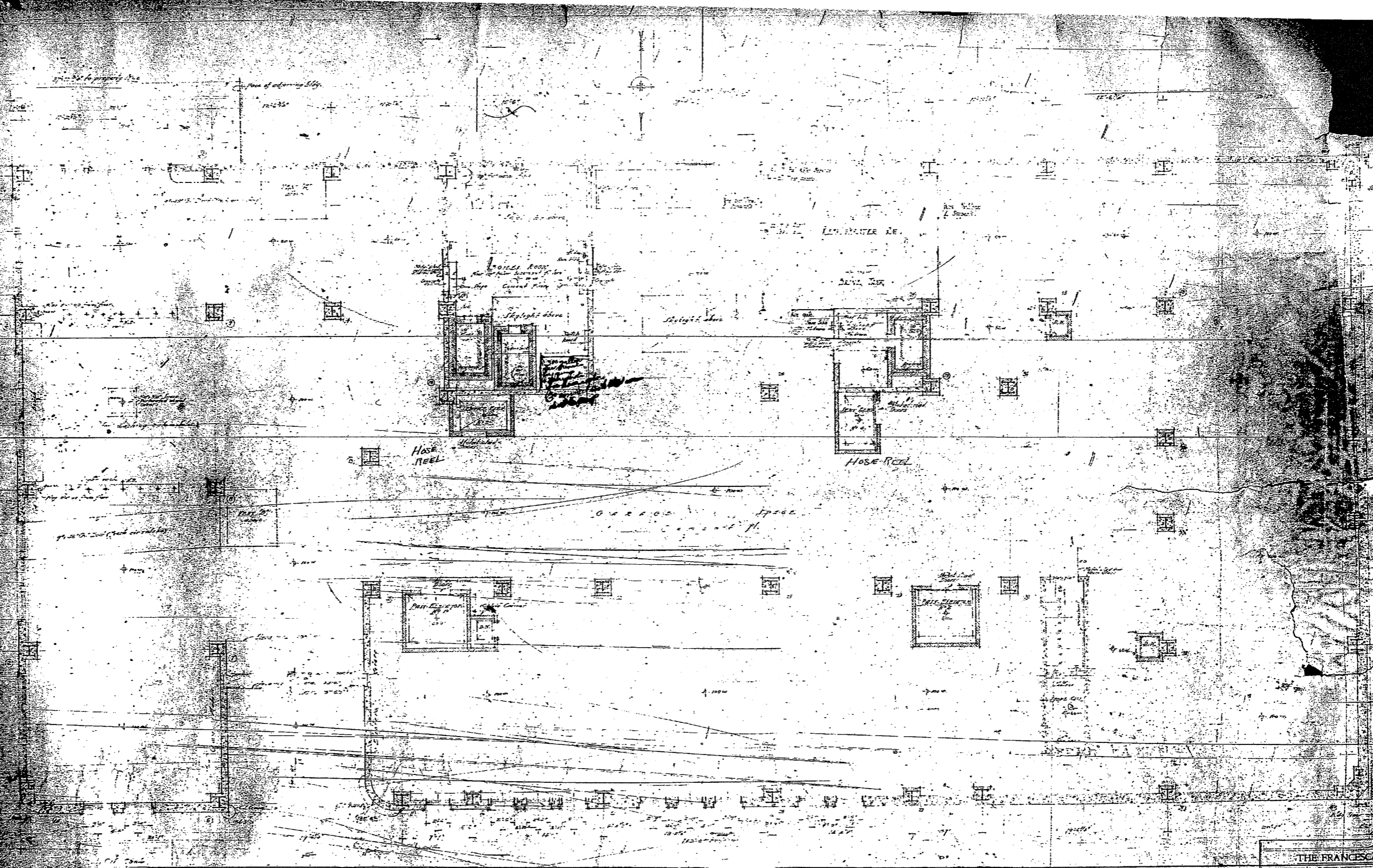
ELEVATIONS & DEPTHS OF FOOTINGS

THE ... APARTMENTS
A.C.B. ... ARCHITECTS AND ENGINEERS
MAURICE ...
DRAWING E-11

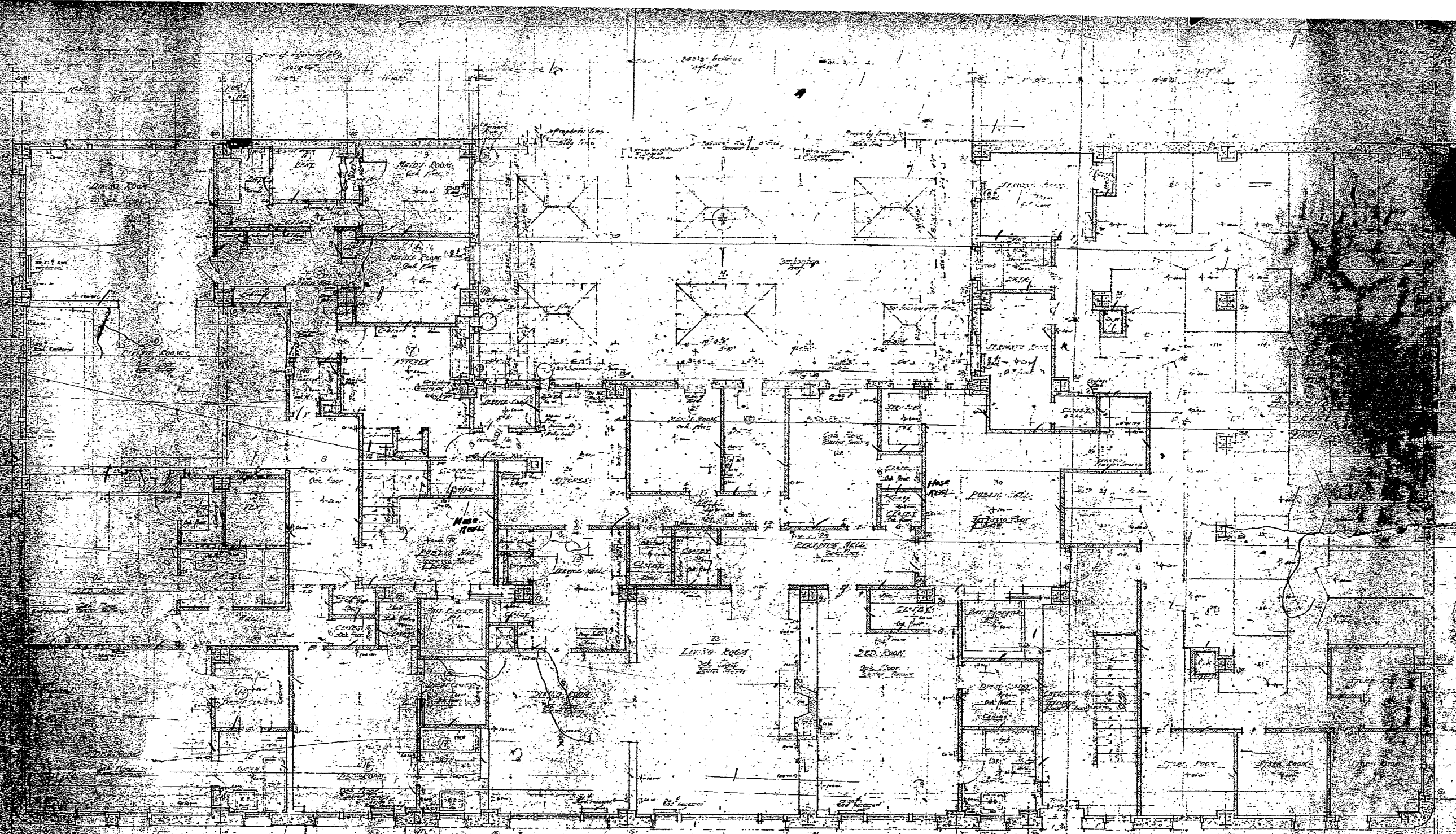


THE FRANCISCA APARTMENT

DEPT. OF BUILDINGS



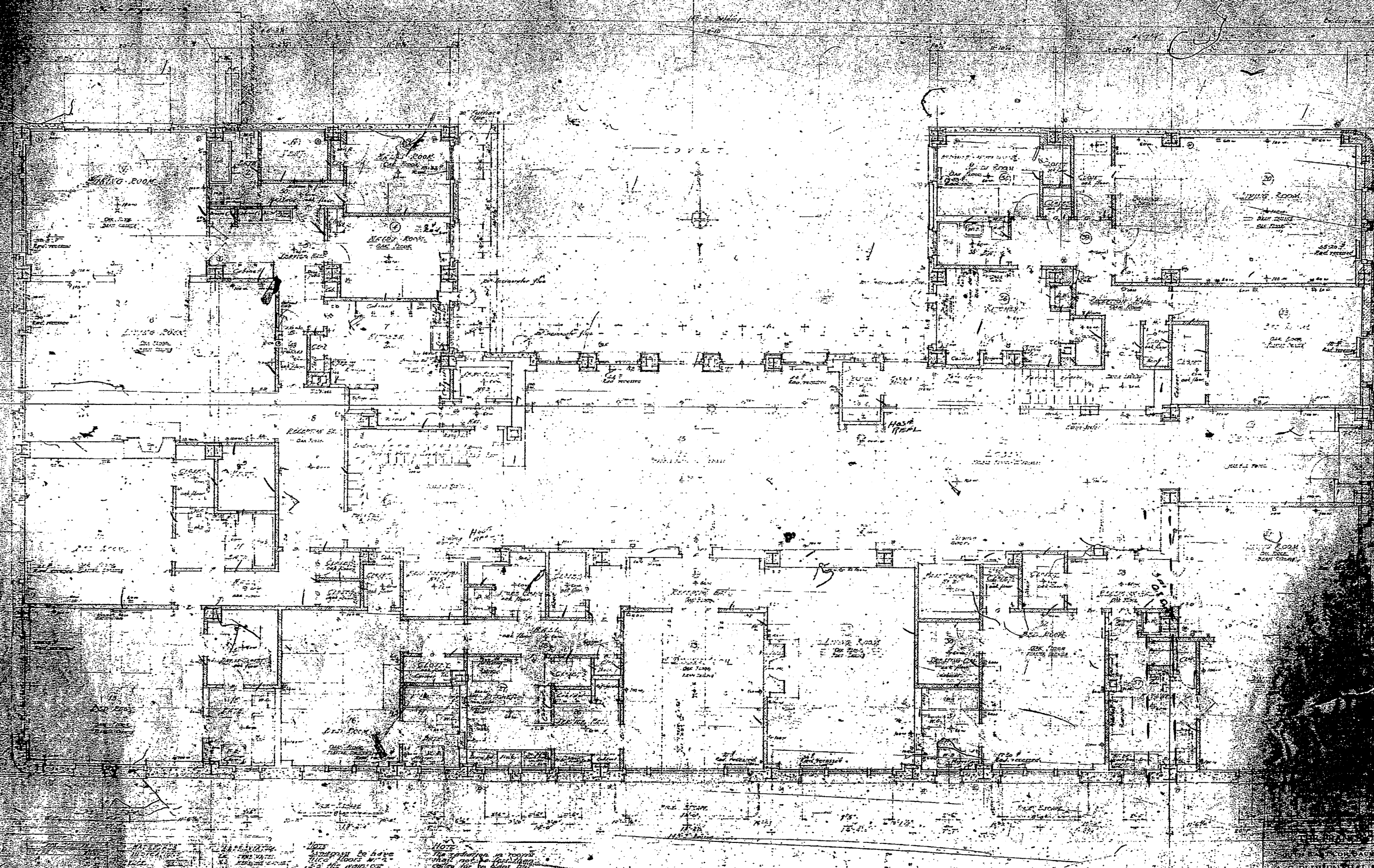
THE FRANCESCA APARTMENT
 SOUTH EAST COR. SACRAMENTO ST. 1896
 A. C. BLUMENTHAL & CO., Eng'rs
 G. ALBERT LANSBURGH
 KENNETH MACDONALD, JR. ARCHITECT
 MAURICE C. COUCHOT
 DRAWING NO. 1



SYMBOL	DESCRIPTION
[Symbol]	DOOR
[Symbol]	WINDOW
[Symbol]	STAIR
[Symbol]	ELEVATOR
[Symbol]	PLUMBING
[Symbol]	ELECTRICAL
[Symbol]	MECHANICAL
[Symbol]	STRUCTURAL

NOTE:
 The notation in lower part of the plan shows a plan but may be mistaken as to the respective N. of Section.

THE FRANCIS
 SOUTH EAST COR. S. ...
A. C. BLUMENTHAL & CO.
 ARCHT.
 G. ALBERT LANSBURY, JR. ARCHT.
 KENNETH MACDONALD, JR. ARCHT.
 MAURICE C. COUCHOT ARCHT.
 DRAWING No. 2

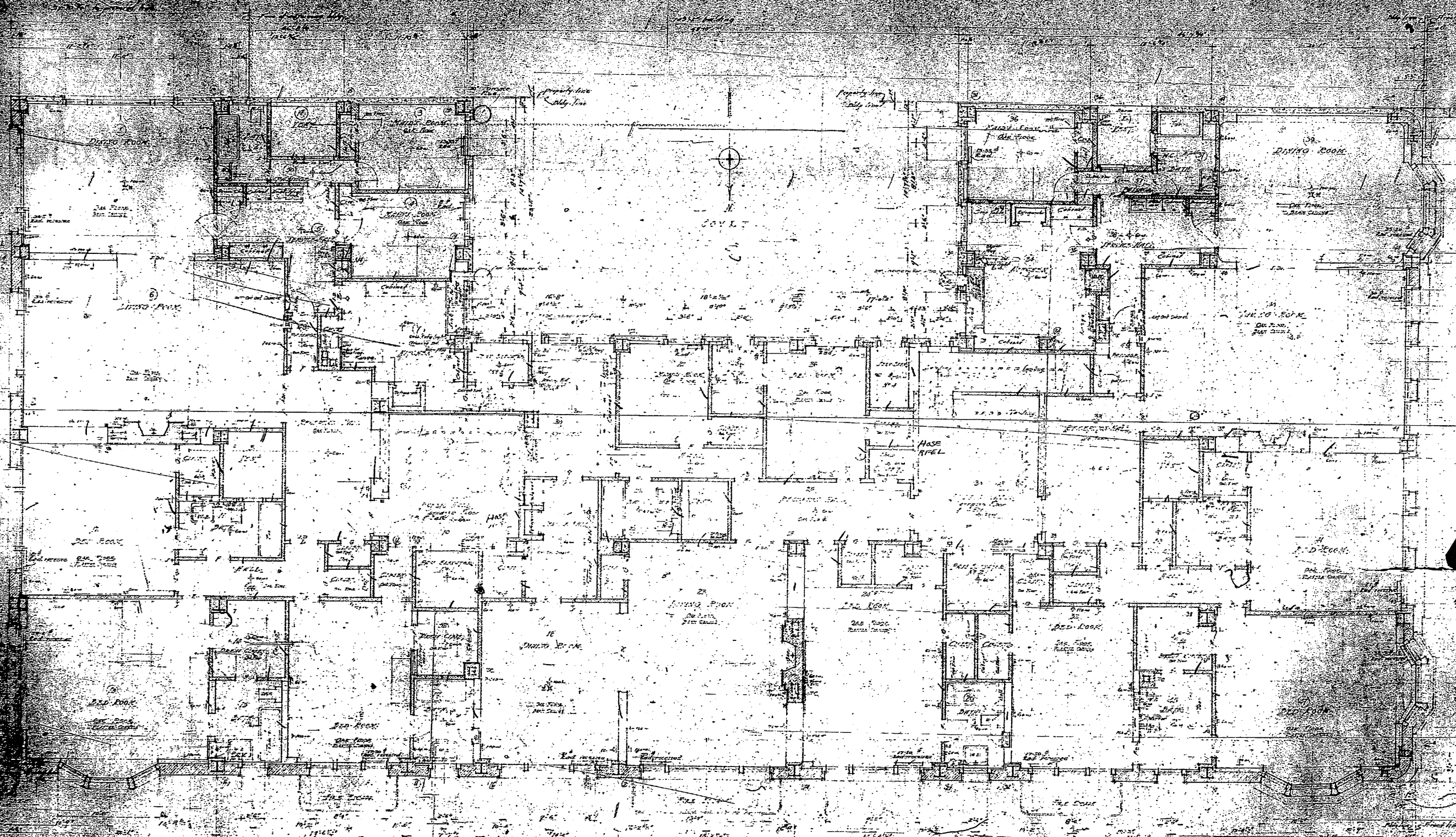


NOTES

1. The apartment in rooms 1, 2, 3, 4, 5, 6, 7, 8, 9, 10, 11, 12, 13, 14, 15, 16, 17, 18, 19, 20, 21, 22, 23, 24, 25, 26, 27, 28, 29, 30, 31, 32, 33, 34, 35, 36, 37, 38, 39, 40, 41, 42, 43, 44, 45, 46, 47, 48, 49, 50, 51, 52, 53, 54, 55, 56, 57, 58, 59, 60, 61, 62, 63, 64, 65, 66, 67, 68, 69, 70, 71, 72, 73, 74, 75, 76, 77, 78, 79, 80, 81, 82, 83, 84, 85, 86, 87, 88, 89, 90, 91, 92, 93, 94, 95, 96, 97, 98, 99, 100, 101, 102, 103, 104, 105, 106, 107, 108, 109, 110, 111, 112, 113, 114, 115, 116, 117, 118, 119, 120, 121, 122, 123, 124, 125, 126, 127, 128, 129, 130, 131, 132, 133, 134, 135, 136, 137, 138, 139, 140, 141, 142, 143, 144, 145, 146, 147, 148, 149, 150, 151, 152, 153, 154, 155, 156, 157, 158, 159, 160, 161, 162, 163, 164, 165, 166, 167, 168, 169, 170, 171, 172, 173, 174, 175, 176, 177, 178, 179, 180, 181, 182, 183, 184, 185, 186, 187, 188, 189, 190, 191, 192, 193, 194, 195, 196, 197, 198, 199, 200, 201, 202, 203, 204, 205, 206, 207, 208, 209, 210, 211, 212, 213, 214, 215, 216, 217, 218, 219, 220, 221, 222, 223, 224, 225, 226, 227, 228, 229, 230, 231, 232, 233, 234, 235, 236, 237, 238, 239, 240, 241, 242, 243, 244, 245, 246, 247, 248, 249, 250, 251, 252, 253, 254, 255, 256, 257, 258, 259, 260, 261, 262, 263, 264, 265, 266, 267, 268, 269, 270, 271, 272, 273, 274, 275, 276, 277, 278, 279, 280, 281, 282, 283, 284, 285, 286, 287, 288, 289, 290, 291, 292, 293, 294, 295, 296, 297, 298, 299, 300, 301, 302, 303, 304, 305, 306, 307, 308, 309, 310, 311, 312, 313, 314, 315, 316, 317, 318, 319, 320, 321, 322, 323, 324, 325, 326, 327, 328, 329, 330, 331, 332, 333, 334, 335, 336, 337, 338, 339, 340, 341, 342, 343, 344, 345, 346, 347, 348, 349, 350, 351, 352, 353, 354, 355, 356, 357, 358, 359, 360, 361, 362, 363, 364, 365, 366, 367, 368, 369, 370, 371, 372, 373, 374, 375, 376, 377, 378, 379, 380, 381, 382, 383, 384, 385, 386, 387, 388, 389, 390, 391, 392, 393, 394, 395, 396, 397, 398, 399, 400, 401, 402, 403, 404, 405, 406, 407, 408, 409, 410, 411, 412, 413, 414, 415, 416, 417, 418, 419, 420, 421, 422, 423, 424, 425, 426, 427, 428, 429, 430, 431, 432, 433, 434, 435, 436, 437, 438, 439, 440, 441, 442, 443, 444, 445, 446, 447, 448, 449, 450, 451, 452, 453, 454, 455, 456, 457, 458, 459, 460, 461, 462, 463, 464, 465, 466, 467, 468, 469, 470, 471, 472, 473, 474, 475, 476, 477, 478, 479, 480, 481, 482, 483, 484, 485, 486, 487, 488, 489, 490, 491, 492, 493, 494, 495, 496, 497, 498, 499, 500, 501, 502, 503, 504, 505, 506, 507, 508, 509, 510, 511, 512, 513, 514, 515, 516, 517, 518, 519, 520, 521, 522, 523, 524, 525, 526, 527, 528, 529, 530, 531, 532, 533, 534, 535, 536, 537, 538, 539, 540, 541, 542, 543, 544, 545, 546, 547, 548, 549, 550, 551, 552, 553, 554, 555, 556, 557, 558, 559, 560, 561, 562, 563, 564, 565, 566, 567, 568, 569, 570, 571, 572, 573, 574, 575, 576, 577, 578, 579, 580, 581, 582, 583, 584, 585, 586, 587, 588, 589, 590, 591, 592, 593, 594, 595, 596, 597, 598, 599, 600, 601, 602, 603, 604, 605, 606, 607, 608, 609, 610, 611, 612, 613, 614, 615, 616, 617, 618, 619, 620, 621, 622, 623, 624, 625, 626, 627, 628, 629, 630, 631, 632, 633, 634, 635, 636, 637, 638, 639, 640, 641, 642, 643, 644, 645, 646, 647, 648, 649, 650, 651, 652, 653, 654, 655, 656, 657, 658, 659, 660, 661, 662, 663, 664, 665, 666, 667, 668, 669, 670, 671, 672, 673, 674, 675, 676, 677, 678, 679, 680, 681, 682, 683, 684, 685, 686, 687, 688, 689, 690, 691, 692, 693, 694, 695, 696, 697, 698, 699, 700, 701, 702, 703, 704, 705, 706, 707, 708, 709, 710, 711, 712, 713, 714, 715, 716, 717, 718, 719, 720, 721, 722, 723, 724, 725, 726, 727, 728, 729, 730, 731, 732, 733, 734, 735, 736, 737, 738, 739, 740, 741, 742, 743, 744, 745, 746, 747, 748, 749, 750, 751, 752, 753, 754, 755, 756, 757, 758, 759, 760, 761, 762, 763, 764, 765, 766, 767, 768, 769, 770, 771, 772, 773, 774, 775, 776, 777, 778, 779, 780, 781, 782, 783, 784, 785, 786, 787, 788, 789, 790, 791, 792, 793, 794, 795, 796, 797, 798, 799, 800, 801, 802, 803, 804, 805, 806, 807, 808, 809, 810, 811, 812, 813, 814, 815, 816, 817, 818, 819, 820, 821, 822, 823, 824, 825, 826, 827, 828, 829, 830, 831, 832, 833, 834, 835, 836, 837, 838, 839, 840, 841, 842, 843, 844, 845, 846, 847, 848, 849, 850, 851, 852, 853, 854, 855, 856, 857, 858, 859, 860, 861, 862, 863, 864, 865, 866, 867, 868, 869, 870, 871, 872, 873, 874, 875, 876, 877, 878, 879, 880, 881, 882, 883, 884, 885, 886, 887, 888, 889, 890, 891, 892, 893, 894, 895, 896, 897, 898, 899, 900, 901, 902, 903, 904, 905, 906, 907, 908, 909, 910, 911, 912, 913, 914, 915, 916, 917, 918, 919, 920, 921, 922, 923, 924, 925, 926, 927, 928, 929, 930, 931, 932, 933, 934, 935, 936, 937, 938, 939, 940, 941, 942, 943, 944, 945, 946, 947, 948, 949, 950, 951, 952, 953, 954, 955, 956, 957, 958, 959, 960, 961, 962, 963, 964, 965, 966, 967, 968, 969, 970, 971, 972, 973, 974, 975, 976, 977, 978, 979, 980, 981, 982, 983, 984, 985, 986, 987, 988, 989, 990, 991, 992, 993, 994, 995, 996, 997, 998, 999, 1000.

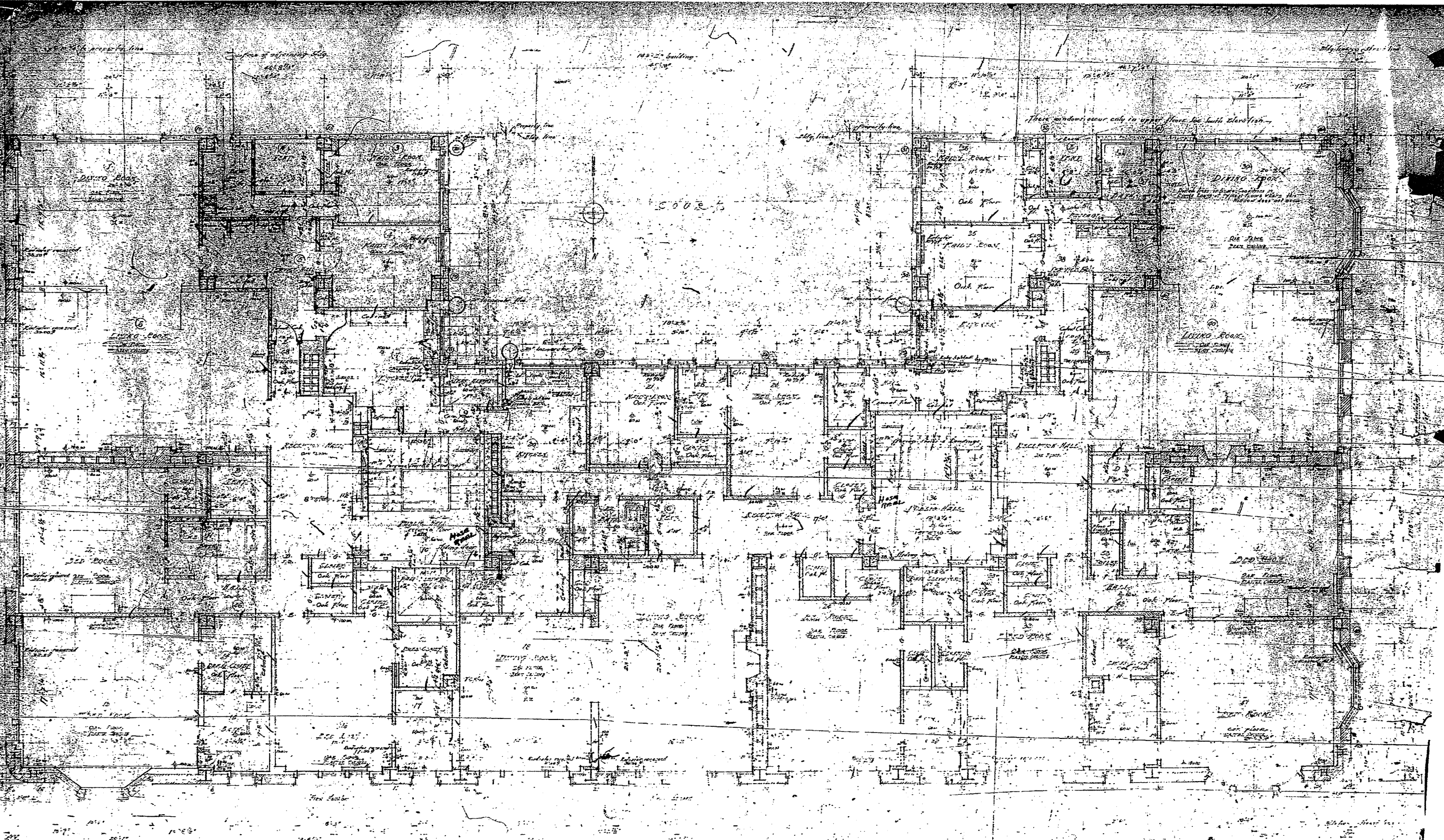
FIRST FLOOR

THE PRINCE APARTMENTS
A. C. BUENHUAL & CO. - EXCLUSIVE AGENTS
ALBERT LANSBURGH
KENNETH MACDONALD
MAURICE G. COUCHOT
ARCHITECTS
DRAWING NO. 3



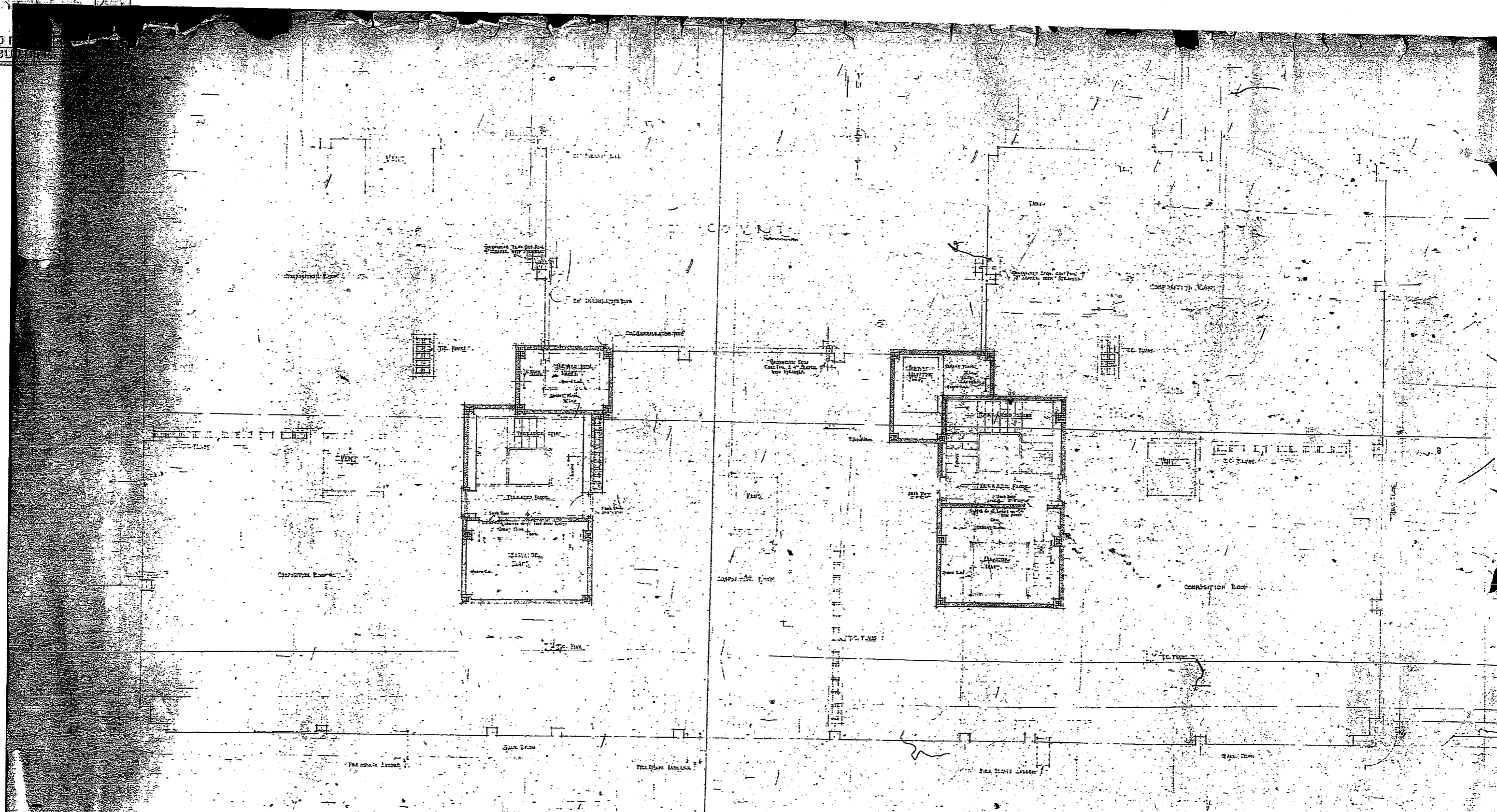
NOTE: Both units to have tile floors and
 also tile partitions in lower bathroom cap.
 Also note in kitchen that the tile should
 be in kitchen.
 3. The kitchen in front should be tiled
 and the tile should be in kitchen as
 for the regular common kitchen.

THE FRANCESCA APARTMENT
 SOUTH EAST COR. SACRAMENTO & F
 A. C. BLUMENTHAL & CO., ENGINEERS
 G. ALBERT LANSBURGH
 KENNETH MACDONALD, JR.
 MAURICE C. COUCHOT
 DRAWING No. 4



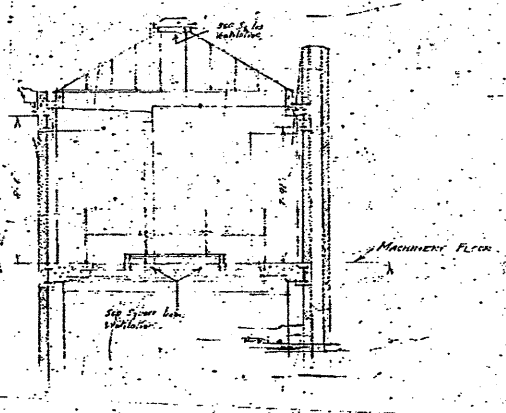
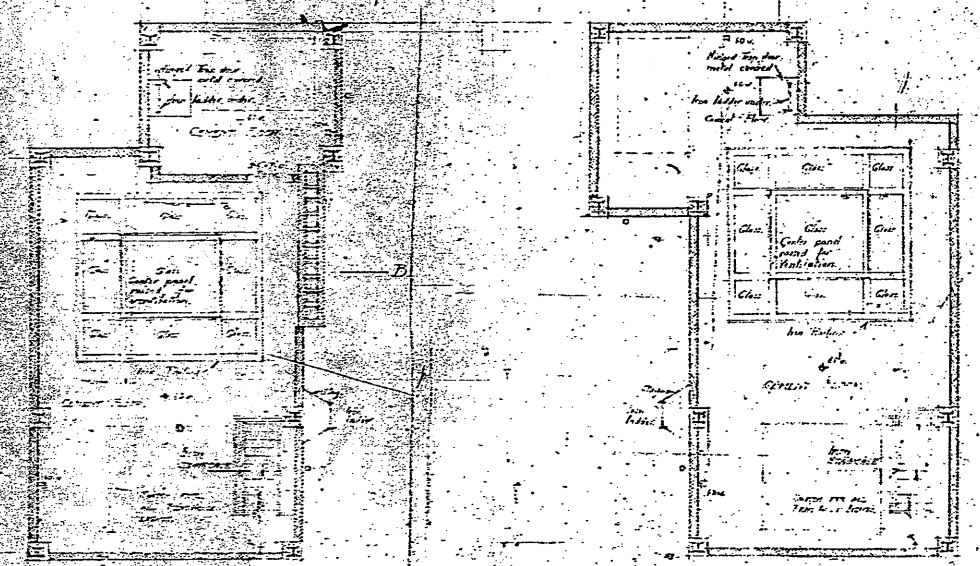
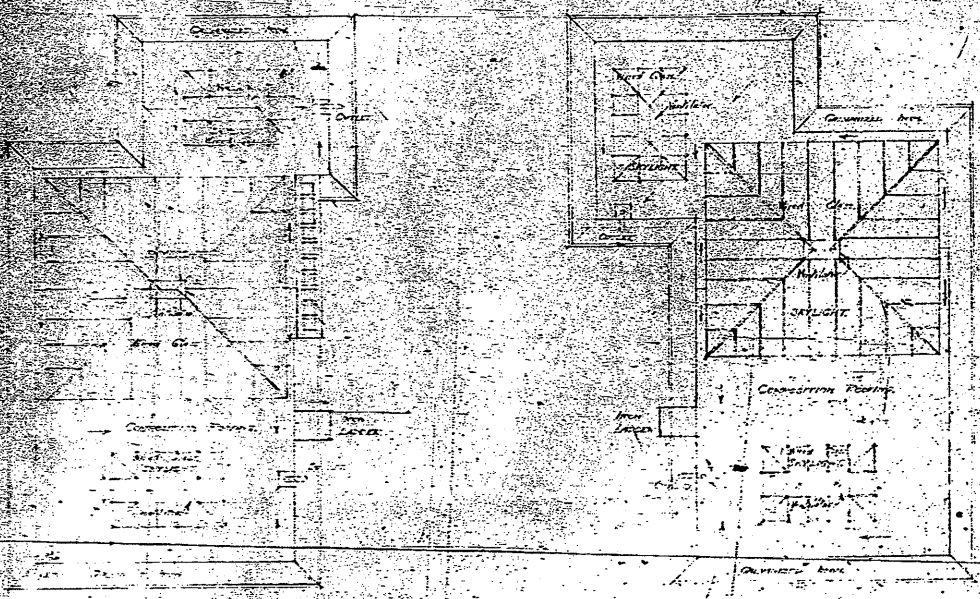
NO.	DESCRIPTION	QTY.	UNIT PRICE	TOTAL
1
2
3
4
5
6
7
8
9
10
11
12
13
14
15
16
17
18
19
20
21
22
23
24
25
26
27
28
29
30
31
32
33
34
35
36
37
38
39
40
41
42
43
44
45
46
47
48
49
50
51
52
53
54
55
56
57
58
59
60
61
62
63
64
65
66
67
68
69
70
71
72
73
74
75
76
77
78
79
80
81
82
83
84
85
86
87
88
89
90
91
92
93
94
95
96
97
98
99
100

THE FRANCESCA APARTMENT
 SOUTH EAST COR. SACRAMENT ST.
 A. C. BLUMENTHAL &
 G. ALBERT LAMB, ARCHT.
 KENNETH MACDONALD, JR., ARCHT.
 MAURICE C. COUCHOT, ARCHT.
 DRAWING NO. 5



FRANCISCA APARTMENTS

THE FRANCESCA APARTMENTS
 SOUTH EAST COR. SACRAMENTO & POWELL STS.
 A. C. BLUMENTHAL & CO., EXCLUSIVE AGENTS
 G. ALBERT LANGRISH
 J. SINNETH MACDONALD, JR. ARCHITECTS ASSOCIATES
 MAURICE C. COUCHOT
 DRAWING NO. 6 SCALE 1/4" = 1'-0"



MACHINERY ROOM WITH ELEVATOR HOIST ROOM
MACHINERY ROOM FOR ELEVATOR NO. 2

THE FRANCESCA APARTMENTS
SOUTH E. VAN NESS ST. SAN FRANCISCO, CALIF.
A. C. BLUMENTHAL & CO., Exclusive Agents
MARGARET L. SULLIVAN
GEO. H. MACDONALD, JR. ARCHITECTS ASSOCIATED
MAURICE C. COUCHOT
DRAWING NO. 7